

ROTARY GEAR PUMPS FOR HEAVY DUTIES

For over 100 years Albany Pumps have been used for almost every type of liquid with viscosity's ranging from that of aviation spirit to plastics. It is impossible to illustrate and describe every application but this leaflet gives a fair indication of the wide range of types available, and of the duties which they perform.

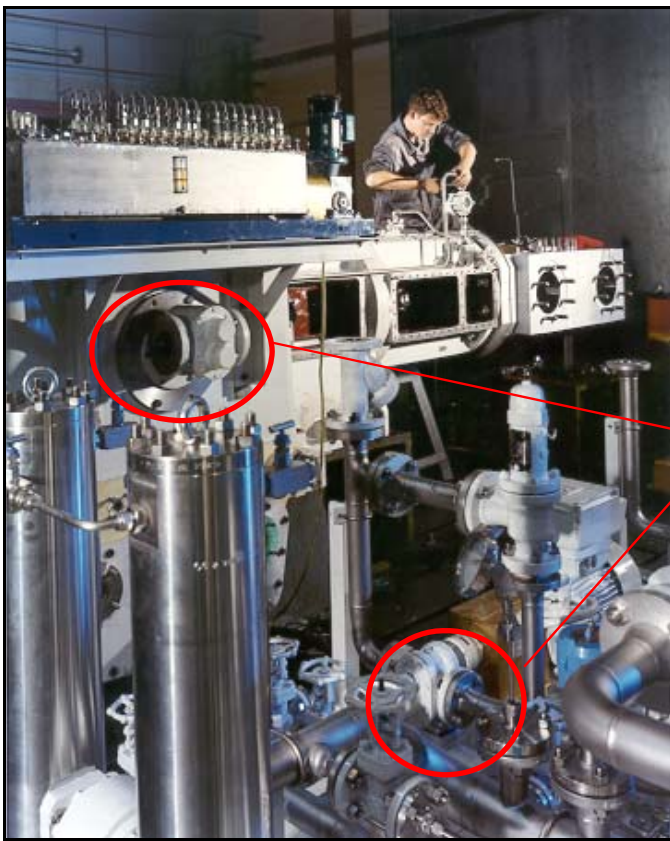
REFINED TAR
GLUCOSE
SIZE . WAX
CHOCOLATE
COCOA BUTTER
WINES & SPIRITS

VISCOSE
GLUE
MOLASSES
ALL OILS
GREASE
FOODSTUFFS

SILICATE OF SODA
PAINTS, RESINS
FATS
ASPHALT
PETROL
ACIDS . ALKALIS

BITUMEN
VARNISH
SOAP
PRINTING INK
PARAFFIN
POLYMERS

Duplex 2" Albany relief valve pumps for diesel transfer on an Indian Oil Platform. This unit meets API 676 and stringent technical and paint specifications.



High pressure reciprocating compressor fitted with a crankshaft driven 3" Albany gear pump. A motor driven Albany API 676 pump gives pre and post lube service.

RANGE OF SIZES AND CAPACITIES

TYPES SMC & HD

Pump Size	Branch Size	100 rpm	250 rpm	500 rpm	750 rpm
		L/m	L/m	L/m	L/m
1" SMC	1" or 1½"		60		180
HD3	DIN40 PN16	27	68	136	204
HD4	DIN50 PN16	40	95	195	285
HD5	DIN 65 PN16	50	120	245	360
HD6	DIN 80 PN16	66	165	327	495
HD7	DIN 80 PN16	81	203	400	610
HD8	DIN 100 PN16	100	250	500	750
HD10 DH	4"	132	330	618	990
3" SMC	4"	182	525	-	Please refer to works for these duties
3" SMC x 9	6" inlet	260	682	-	
HD12 DH	4"	227	750	1364	
4" SMC	4"	364	950	-	
HD14 DH	6" or 8"	445	1250	2273	
5" SMC	6" or 8"	545	1400	-	
6" SMC	8" or 10"	875	2270	-	

For larger capacities we offer:-
Albany Internal Rotary Lobe pumps maximum capacity 3500 l/min @ 100 rpm.

Method of drive

Pumps can be supplied coupled to electric motors, geared motors, engines or to variable speed drives.

Corrosion resistance

Pumps are offered in stainless steels, bronzes, ni-resist cast iron or specialised alloys.

Relief valves

Incorporated relief valves give 'full bore' relief on all but the highest viscosity liquids. They are adjustable for pressure and direction of pump rotation.

Sealing

Pumps can be fitted with mechanical seals or packed glands. The duty will dictate the seal choice.

Timing Gears

With stainless steel pumps, pumps for foodstuffs or abrasive materials timing gears are fitted to prevent metallic contact between the pumping rotors.

Viscous liquids

Albany pumps can be designed for use with liquids of very high viscosity. Pipe work on the suction side of the pump must be provided to allow the liquid to enter the pump in the simplest possible way and be of ample bore.

Bearings

Remote ball and roller bearings can be supplied where the nature of the fluid rules out the use of internal bearings. Internal bearings are usually supplied in PTFE based materials or bronze. They can be supplied in graphite lubricated forms for high temperature applications. Our high pressure pumps use large size plain bearings. This design provides hydrodynamic operation at all viscosities.

Oil or Steam Jacketed Pumps

Most Albany gear pumps have jacketed bodies or covers. Standard jacket pressures are 8 bars.

Electrically Heated Pumps

Available for HD3 – 3" SMC sizes (AP10 – AP13.5). See Leaflet B1 for details

TYPE AP (HIGH SPEED)

Pump Size	Branch Size (ins)	1000 rpm	1500 rpm
		L/m	L/m
AP4	½	19	28
AP5	¾	31	45
AP6	¾ or 1	43	65
AP7	1	68	100
AP8	1¼ or 1½	108	160
AP9	1½	140	230
AP9W	2½	205	300
AP11DH	2	270	410
AP11.5DH	2½	350	525
AP12DH	2½ or 3	485	Please refer to works for these duties
AP13DH	3 or 4	730	
AP14DH	4	1200	
AP15DH	6 or 8	1589	
HD11Q	6	1940	

For larger capacities we offer:-
Albany Twin Screw Pumps maximum capacity 300 – 400 m³/hr.

Special Pumps

We are specialists and design and manufacture pumps to individual requirements.

Documentation & Paint

Many of our customers are in the oil & gas industry including offshore with stringent QA requirements. Albany has long experience of supplying pumps worldwide that comply with customer specifications and pump duty. Working with CAD and our computer assisted test rigs we can supply the information and quality back up required. An epoxy "offshore" paint system is available.

Other Albany Products include:

Twin Screw & Rotary Lobe Pumps (formerly made by Stothert & Pitt)
Road Tanker pumps
Special Centrifugal Pumps
Moulded Nylon gear pumps

See separate Leaflets.

Quality Assurance to
BS EN ISO 9001:2008



Certificate No. FM 20986

ALBANY ENGINEERING COMPANY LIMITED, Church Road, Lydney, GLOS GL15 5EQ

Tel: +44 (0) 1594 842275
Fax: +44 (0) 1594 842574

e-mail: sales@albany-pumps.co.uk
www: albany-pumps.co.uk